

The Trafford and Stockport College Group's

SKILLS FOR CAREERS PASSPORT

INFORMATION FOR PARENTS AND CARERS

EXPERIENCE MORE, BECOME MORE



CONTACT AND USEFUL INFORMATION



MICHELLE MCLAUGHLIN, MBE

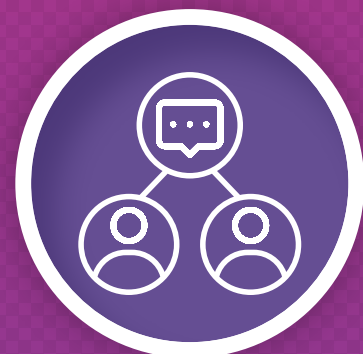
Head of Personal and Professional
Development

michelle.mclaughlin@tscg.ac.uk



THE CAREERS TEAM

careers@tscg.ac.uk



BETH ROBINSON

Careers and Schools Liaison Manager

beth.robinson@tscg.ac.uk



THE WORK EXPERIENCE TEAM

workexperience@tscg.ac.uk



LAURA RIGBY

Work Experience and
Industry Placement Lead

laura.rigby@tscg.ac.uk



THE APPRENTICESHIP TEAM

apprenticeships@tscg.ac.uk



CHARLOTTE BROCKLEHURST

Student Enrichment Lead

charlotte.brocklehurst@tscg.ac.uk



OVERVIEW

Our Careers Passport is designed to help students navigate their educational and career pathways effectively. It includes a variety of activities and resources aimed at ensuring students are well-prepared for their future careers.



RIGHT LEARNER, RIGHT COURSE

This initiative helps students identify their strengths and interests, ensuring they choose courses that align with their career aspirations and personal goals. In addition, we include a three-week subject induction to support decision making and confirm students feel confident in their choice.



SKILLS ASSESSMENTS

Regular assessments are conducted to evaluate student's skills and competencies, providing insights into areas of improvement and helping to build a strong career focused skills set.



1:1 CAREERS APPOINTMENTS

In line with Gatsby Benchmarks all students will have access to bespoke advice tailored to student progression options and opportunities.



EMPLOYER VISITS

Students get the opportunity to visit various employers, gaining first-hand experience of different work environments and understanding the expectations of the industry. With each curriculum area comes a Careers Focus Month where students can access a range of industry specific activities to support workplace development and in person access to employers.



WORKSHOPS

A range of workshops are organised to develop essential skills such as communication, teamwork, and problem-solving. These workshops also cover career-specific skills and knowledge.



ENRICHMENT

To enhance curriculum course delivery, a range of meaningful and relevant enrichment activities are available. Clubs and Societies that add valuable life skills, personal presentation skills and oracy are available to all students in addition to industry specific enrichment options.



UCAS GUIDANCE

Support is provided for students applying to universities through UCAS, including help with personal statements, application processes, and choosing the right courses.



UNIVERSITY VISITS

Organised visits to universities allow students to explore different campuses, meet faculty members, and get a feel for university life, helping them make informed decisions about their higher education.



APPRENTICESHIPS

In line with our Apprenticeship delivery, all apprentices will have access to regular careers support, advice and guidance throughout their learning journey.

Our Careers Passport is an invaluable resource that guides students through their college journey. It supports understanding of what can be expected and the careers focused activities available across TSCG, creating a road map for their career pathway.

CAREERS PASSPORT

2025 – 2026



LIFE READY

Equipped with the skills knowledge and mindset to succeed in life.
E.g. emotional intelligence, financial literacy and critical thinking.



WORK READY

Have the essential skills and attributes to succeed in the workplace
E.g. Communication, time management, reliability, adaptability and technical skills.



CAREER READY

Ready for the next level in education and training and setting career goals. E.g. Commitment to further learning, building and maintaining professional relationships, adaptable to changes in the job market.



ENTRY, LEVEL 1 & LEVEL 2

AUTUMN TERM

Activity	Delivery Partner	Life Ready/Work Ready/Career Ready	Go Far – How we can help
Right Learner Right Course	Curriculum and Careers Team	<div>Life Ready</div> <div>Work Ready</div>	1:1 appointment to make sure your course choice is aligned to your areas of interest and you gain the right skills for progression.
Skills Assessment	Navigate – Delivery in Tutorial	<div>Life Ready</div> <div>Work Ready</div>	We make sure we can help to develop the important skills needed for life and work.
Employer Visits, Workshops, Presentations	Partner Organisations. Suggestions from Curriculum	<div>Work Ready</div> <div>Career Ready</div>	Trips and visits arranged by your tutor and guest speaker presentations and workshops delivered in your classroom.
1-1 Guidance	Careers Team	<div>Life Ready</div> <div>Work Ready</div> <div>Career Ready</div>	Your time to make sure your Go Far journey gets off to a great start with a 1:1 appointment with our Careers Advisor.

ENTRY, LEVEL 1 & LEVEL 2

SPRING TERM

Activity	Delivery Partner	Life Ready/Work Ready/Career Ready	Go Far – How we can help
Employer Visits, Workshops, Presentations	Partner Organisations	<div>Work Ready</div> <div>Career Ready</div>	Trips and visits arranged by your tutor and guest speaker presentations and workshops delivered in your classroom.
1-1 Guidance	Careers Team	<div>Work Ready</div> <div>Career Ready</div>	Your time to make sure your Go Far journey gets off to a great start with a 1:1 appointment with our Careers Advisor.
WEX (if prepared)	WEX Team	<div>Work Ready</div>	Participate in activities and sessions to develop work ready skills.
Progression Support	Curriculum and Careers Team	<div>Life Ready</div> <div>Work Ready</div>	Targeted support for exploring progression opportunities.
National Apprenticeship Week	External Partners Virtual Offer Apprenticeship Team	<div>Work Ready</div> <div>Career Ready</div>	Understand apprenticeships to make informed decisions in relation to your career pathway.
National Careers Week	External Partners Virtual Offer Apprenticeship Team	<div>Work Ready</div> <div>Career Ready</div>	Encounter a range of employers, apprenticeship providers and work with our internal specialist teams.

ENTRY, LEVEL 1 & LEVEL 2

SUMMER TERM

Activity	Delivery Partner	Life Ready/Work Ready/Career Ready	Go Far – How we can help
Employer Visits, Workshops, Presentations	Partner Organisations. Suggestions from Curriculum	<div>Life Ready</div> <div>Work Ready</div> <div>Career Ready</div>	Trips and visits arranged by your tutor and guest speaker presentations and workshops delivered in your classroom.
1-1 Guidance	Careers Team	<div>Life Ready</div> <div>Work Ready</div> <div>Career Ready</div>	Your time to make sure your Go Far journey gets off to a great start with a 1:1 appointment with our Careers Advisor.

LEVEL 3, YEAR 1

AUTUMN TERM

Activity	Delivery Partner	Life Ready/Work Ready/Career Ready	Go Far – How we can help
Right Learner Right Course	Curriculum and Careers Team	<div>Life Ready</div> <div>Work Ready</div> <div>Career Ready</div>	1:1 appointment to make sure your course choice is aligned to your areas of interest and you gain the right skills for progression.
Skills Assessment	Navigate – Delivery in Tutorial	<div>Life Ready</div> <div>Work Ready</div> <div>Career Ready</div>	We make sure we can help to develop the important skills needed for life and work.
University Talks on Campus	External Partners – Careers to arrange	<div>Life Ready</div> <div>Career Ready</div>	1:1 appointment to make sure your course choice is aligned to your areas of interest and you gain the right skills for progression.
University Visits	Curriculum and Careers Team	<div>Life Ready</div> <div>Career Ready</div>	1:1 appointment to make sure your course choice is aligned to your areas of interest and you gain the right skills for progression.
College Extra Opportunities	Student Enrichment Team	<div>Work Ready</div> <div>Career Ready</div>	We make sure we can help to develop the important skills needed for life and work. Attend Clubs and Societies to develop the essential skills needed for personal growth and development.

LEVEL 3, YEAR 1

AUTUMN TERM (CONTINUED)

Activity	Delivery Partner	Life Ready/Work Ready/Career Ready	Go Far – How we can help
Employer Visits, Workshops, Presentations	Partner Organisations. Suggestions from Curriculum	<div>Work Ready</div> <div>Career Ready</div>	Trips and visits arranged by your tutor and guest speaker presentations and workshops delivered in your classroom.
1-1 Guidance	Careers Team	<div>Work Ready</div> <div>Career Ready</div>	1:1 appointment to make sure your course choice is aligned to your areas of interest and you gain the right skills for progression.

LEVEL 3, YEAR 1

SPRING TERM

Activity	Delivery Partner	Life Ready/Work Ready/Career Ready	Go Far – How we can help
University Talks on Campus	External Partners – Careers to arrange	Career Ready	Attend the HE fair to meet with a range of universities.
University Visits	Curriculum and Careers Team	Career Ready	Visit local universities to get the experience of Higher Education.
College Extra Opportunities	Student Enrichment Team	Life Ready Work Ready Career Ready	We make sure we can help to develop the important skills needed for life and work. Attend Clubs and Societies to develop the essential skills needed for personal growth and development.
Employer Visits, Workshops, Presentations	Partner Organisations. Suggestions from Curriculum	Work Ready Career Ready	Trips and visits arranged by your tutor and guest speaker presentations and workshops delivered in your classroom.
1-1 Guidance	Careers Team	Life Ready Work Ready Career Ready	Your time to make sure your Go Far journey gets off to a great start with a 1:1 appointment with our Careers Advisor.
WEX	WEX Team	Work Ready Career Ready	Embark on real life work experience opportunities and keep up to date by recording on your personal setting. Record the skills you learn and develop.

LEVEL 3, YEAR 1

SPRING TERM (CONTINUED)

Activity	Delivery Partner	Life Ready/Work Ready/Career Ready	Go Far – How we can help
National Apprenticeship Week	External Partners Virtual Offer Apprenticeship Team	Work Ready Career Ready	Understand apprenticeships to make informed decisions in relation to your career pathway.
National Careers Week	External Partners Virtual Offer Apprenticeship Team	Work Ready Career Ready	Encounter a range of employers, apprenticeship providers and work with our internal specialist teams.
Apprenticeship Workshops	External Partners - Careers to Arrange	Life Ready Work Ready Career Ready	Understand apprenticeships to make informed decisions in relation to your career pathway.

LEVEL 3, YEAR 1

SUMMER TERM

Activity	Delivery Partner	Life Ready/Work Ready/Career Ready	Go Far – How we can help
University Talks on Campus	External Partners – Careers to arrange	<div>Work Ready</div> <div>Career Ready</div>	Attend the HE fair to meet with a range of universities.
University Visits	Curriculum and Careers Team	<div>Work Ready</div> <div>Career Ready</div>	Visit local universities to get the experience of Higher Education.
College Extra Opportunities	Student Enrichment Team	<div>Life Ready</div> <div>Work Ready</div> <div>Career Ready</div>	We make sure we can help to develop the important skills needed for life and work. Attend Clubs and Societies to develop the essential skills needed for personal growth and development.
Skills Assessment	Navigate – Delivery in Tutorial	<div>Life Ready</div> <div>Work Ready</div> <div>Career Ready</div>	We make sure we can help to develop the important skills needed for life and work.
Employer Visits, Workshops, Presentations	Partner Organisations. Suggestions from Curriculum	<div>Work Ready</div> <div>Career Ready</div>	Trips and visits arranged by your tutor and guest speaker presentations and workshops delivered in your classroom.

LEVEL 3, YEAR 1

SUMMER TERM (CONTINUED)

Activity	Delivery Partner	Life Ready/Work Ready/Career Ready	Go Far – How we can help
1-1 Guidance	Careers Team	<div>Life Ready</div> <div>Work Ready</div> <div>Career Ready</div>	Your time to make sure your Go Far journey gets off to a great start with a 1:1 appointment with our Careers Advisor.
Careers and Job Fair	Community Partners	<div>Life Ready</div> <div>Work Ready</div> <div>Career Ready</div>	Attend the opportunities for employer direct experiences via Careers Focus Months and Industry Weeks.
UCAS Prep	Navigate – Delivery in Tutorial	<div>Career Ready</div>	Receive 1:1 support for your UCAS application and learn how to present your skills.
WEX	WEX Team	<div>Career Ready</div>	Embark on real life work experience opportunities and keep up to date by recording on your personal setting. Record the skills you learn and develop.

LEVEL 3, YEAR 2

AUTUMN TERM

Activity	Delivery Partner	Life Ready/Work Ready/Career Ready	Go Far – How we can help
UCAS App Support	Curriculum and Careers Team	Career Ready	Receive 1:1 support for your UCAS application and learn how to present your skills.
Skills Assessment	Navigate – Delivery in Tutorial	Work Ready Career Ready	We make sure we can help to develop the important skills needed for life and work.
University Talks on Campus	External Partners – Careers to arrange	Career Ready	Attend the HE fair to meet with a range of universities.
University Visits	Curriculum and Careers Team	Career Ready	Visit local universities with specialisms in your chosen area of study.
College Extra Opportunities	Student Enrichment Team	Life Ready Work Ready Career Ready	We make sure we can help to develop the important skills needed for life and work. Attend Clubs and Societies to develop the essential skills needed for personal growth and development.

LEVEL 3, YEAR 2

AUTUMN TERM (CONTINUED)

Activity	Delivery Partner	Life Ready/Work Ready/Career Ready	Go Far – How we can help
Employer Visits, Workshops, Presentations	Partner Organisations. Suggestions from Curriculum	<div>Work Ready</div> <div>Career Ready</div>	Trips and visits arranged by your tutor and guest speaker presentations and workshops delivered in your classroom.
1-1 Guidance	Careers Team	<div>Life Ready</div> <div>Work Ready</div> <div>Career Ready</div>	Your time to make sure your Go Far journey gets off to a great start with a 1:1 appointment with our Careers Advisor.

LEVEL 3, YEAR 2

SPRING TERM

Activity	Delivery Partner	Life Ready/Work Ready/Career Ready	Go Far – How we can help
UCAS Deadline	Careers Team	Career Ready	Receive 1:1 support for your UCAS application and learn how to present your skills.
Understanding Student Finance	External Partners – Careers to arrange	Life Ready Career Ready	Meet with money management experts to support understanding of student finance through bespoke “Unidosh” sessions.
National Apprenticeship Week	External Partners Virtual Offer Apprenticeship Team	Work Ready Career Ready	Understand apprenticeships to make informed decisions in relation to your career pathway.
National Careers Week	External Partners Virtual Offer Apprenticeship Team	Work Ready Career Ready	Encounter a range of employers, apprenticeship providers and work with our internal specialist teams.
Progression Support	Curriculum and Careers Team	Work Ready Career Ready	Targeted support for exploring progression opportunities.
Not Going to Uni Presentation	Careers Team	Work Ready	Attend “opportunities” presentation that support decisions about your next steps.

LEVEL 3, YEAR 2

SPRING TERM (CONTINUED)

Activity	Delivery Partner	Life Ready/Work Ready/Career Ready	Go Far – How we can help
1-1 Guidance	Careers Team	<div>Life Ready</div> <div>Work Ready</div> <div>Career Ready</div>	Your time to make sure your Go Far journey gets off to a great start with a 1:1 appointment with our Careers Advisor.
WEX	WEX Team	<div>Work Ready</div> <div>Career Ready</div>	Embark on real life work experience opportunities and keep up to date by recording on your personal setting. Record the skills you learn and develop.
Apprenticeship Workshops	External Partners - Careers to Arrange	<div>Life Ready</div> <div>Work Ready</div> <div>Career Ready</div>	Understand apprenticeships to make informed decisions in relation to your career pathway.

LEVEL 3, YEAR 2

SUMMER TERM

Activity	Delivery Partner	Life Ready/Work Ready/Career Ready	Go Far – How we can help
1-1 Guidance	Careers Team	<div>Life Ready</div> <div>Work Ready</div> <div>Career Ready</div>	Your time to make sure your Go Far journey gets off to a great start with a 1:1 appointment with our Careers Advisor.
Careers and Jobs Fairs	Community Partners	<div>Life Ready</div> <div>Work Ready</div> <div>Career Ready</div>	Attend the opportunities for employer direct experiences via Careers Focus Months and Industry Weeks.



TRAFFORD &
STOCKPORT
COLLEGE GROUP

EXPERIENCE MORE, BECOME MORE